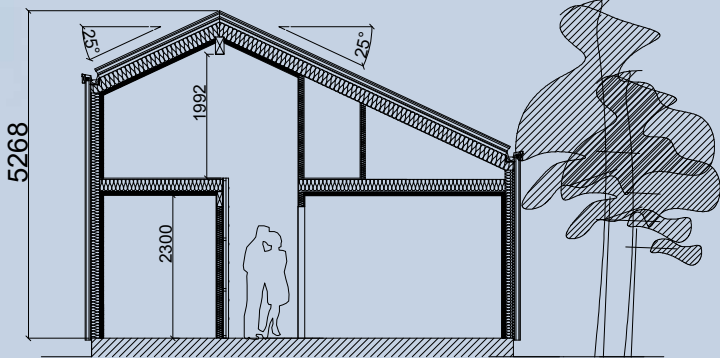


# M70-2

$50\text{m}^2 + 25\text{m}^2(\text{loft}) = 75\text{m}^2$

## Features:

- 2 double beds, 1 single bed and 1 bunk bed (7 people);
- Possibility to make multiple cottages;
- NTA =  $52,5\text{ m}^2$  (1st floor);
- NTA =  $17,6\text{ m}^2$  ;
- BRA =  $70\text{ m}^2$ ;
- BYA =  $74,3\text{ m}^2$ .



75m<sup>2</sup>

